



**PERBADANAN HARTA INTELEK MALAYSIA**  
INTELLECTUAL PROPERTY CORPORATION OF MALAYSIA

32nd Floor, Menara Dayabumi,  
Jalan Sultan Hishamuddin  
50623 Kuala Lumpur, Malaysia  
General Line: 03-2263 2100  
Helpdesk: 03-2274 5113  
Service Counter: 03-2263 2198, 03-2263 2199  
Faks: 03-2274 1332

***Sabah Branch***

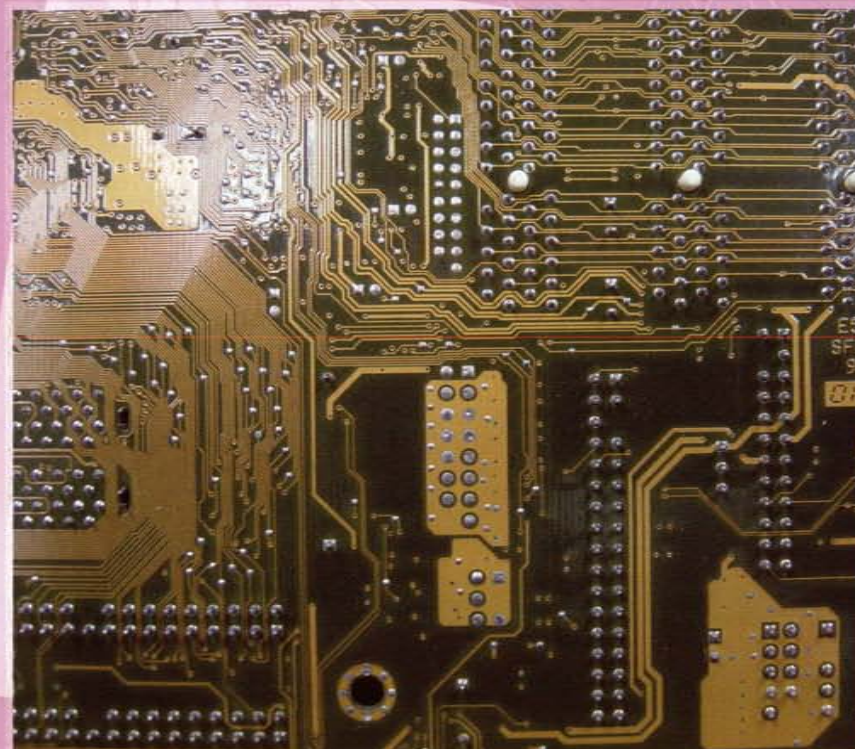
Tingkat 6, Blok C, Beg Berkunci 2068  
49, Jalan Karamuning, 88999, Kota Kinabalu, Sabah  
Tel : 088-233 571 Faks : 088-257 046

***Sarawak Branch***

Lot 9936, (Sublot 5) 3rd Floor, Queen's Court, Block E  
Jalan Wan Alwi, 93350 Kuching, Sarawak  
Tel : 082-459 075 Faks : 082-455 052

[www.myipo.gov.my](http://www.myipo.gov.my)

general information on  
**LAYOUT-DESIGN OF  
INTEGRATED CIRCUITS**



[www.myipo.gov.my](http://www.myipo.gov.my)



## WHAT IS A LAYOUT-DESIGN OF AN INTEGRATED CIRCUIT?

A layout-design of an integrated circuit is the three-dimensional disposition of the elements of an integrated circuit and some or all of the interconnections of the integrated circuit or such three-dimensional disposition prepared for an integrated circuit intended for manufacture.

The law that protects layout-designs of integrated circuits is the Layout-designs of Integrated Circuits Act 2000.

## HOW IS LAYOUT-DESIGN PROTECTED?

**A layout-design is eligible for protection automatically upon fulfillment of the following conditions:**

- It is original, i.e. the result of its creator's own intellectual effort and not commonplace among creators and manufacturers of integrated circuit;
- It has been fixed in a material form or incorporated into an integrated circuit; and
- The right holder of the layout-design is a qualified person.

## WHO IS THE RIGHT HOLDER OF LAYOUT-DESIGN?

- The creator;
- The person who commission if the layout-design is created in pursuance of a commission;
- The employer if the layout-design is created by an employee in the course of his employment.

## TERM OF PROTECTION

**A layout-design is protection for a period of 10 years from the date it is first commercially exploited. Notwithstanding this, the protection granted lapses 15 years after the date it is created.**

## WHAT ARE THE RIGHTS OF A RIGHT HOLDER?

**A right holder of a protected layout-design has the following rights:**

- Reproduce and to authorize the reproduction of his protected layout- design; and
- To commercially exploit and to authorize the commercial exploitation of;
  - His protected layout-design;
  - An integrated circuit in which the layout design is incorporated; or
  - An article that contains an integrated circuit in which the layout-design is incorporated.

